

28Gbps x 4ch Bit Error Rate Tester

BERT-250E-4CH

- A simple 28Gbps BERT for testing in production lines
- Transceiver/TOSA/ROSA line inspection
- Optical Modulator Testing

28Gbps

Built-in CDR

Max. 4ch

Remote



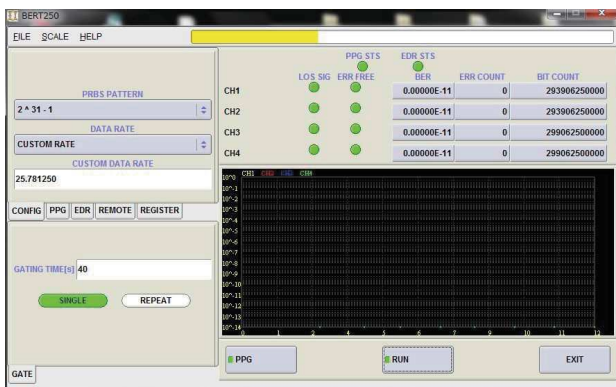
Specifications

Category	Parameter	Min.	Typ.	Max.	Unit
Pattern Generator	Data Rate	25.0		28.3	Gbps
	Data Patterns		2^9-1 , $2^{15}-1$, $2^{31}-1$		
	Output Voltage ¹	400			mVpp
	Rise/Fall Time (20-80%)		15	17	ps
	Jitter (rms)		0.6	0.9	ps
Error Detector	Input Sensitivity		25		mVpp
Electrical	PC Interface		USB, GPIB, Ethernet		
	Power Supply		AC 100-240 (50/60Hz)		Vac
Physical (per unit)	Dimensions (W x H x D)		449 x 88 x 495		mm
	Weight		7		kg

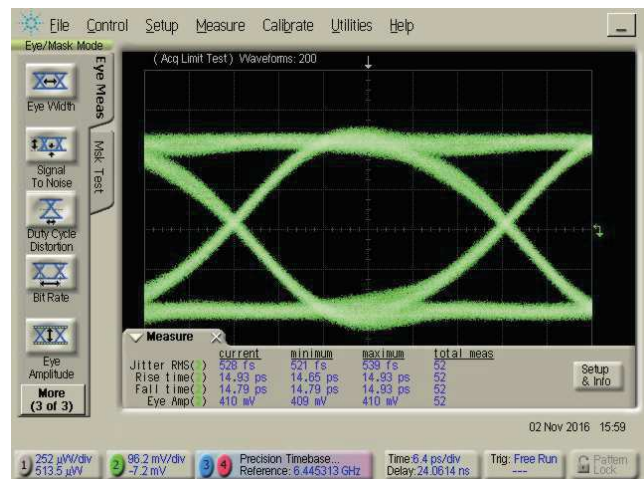
1. Single-ended output.

Note: The above specifications may change without prior notice.

Software Interface



Typical Performance: 25.8Gbps Eye Pattern



Ordering Information

BERT-250E-4CH