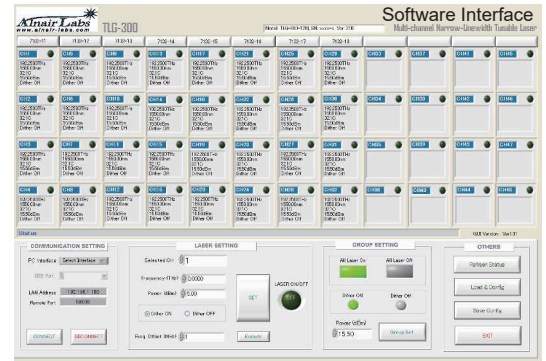


Multi-Channel Narrow-Linewidth Tunable Laser

TLG-300

- Slot configuration allows future channel expansion
- Mainframes can be cascaded to accommodate over 160ch
- Firmware memorizes "last setting" for a hassle-free start-up

1550nm Narrow Line-Width Slot Configuration Max. 48ch Remote



Specifications

Parameter: Mainframe	TLG-300M-12	Unit
Slot Capacity	12	units
Max Laser Module Capacity	48	channels
PC Interface	USB, GPIB, Ethernet	
Laser Safety	Front Panel Key-Lock, Software-Based Interlock	
Power Supply	AC100-240 (50/60Hz)	Vac
Power Consumption	<650	W
Dimensions (W x H x D)	448 x 177 x 540	mm
Weight	<16	kg

Parameter: Laser	Type	Variable tuning Laser	Unit
Output Power Range	C-band	+7 to +15.5	dBm
	L-band	+7 to +13	dBm
Wavelength Range ¹	C-band	1527.60 to 1565.50	nm
	L-band	1570.01 to 1608.76	nm
Frequency Range ¹	C-band	191.50 to 196.25	THz
	L-band	186.35 to 190.95	THz
Frequency Fine Tune Resolution		1	MHz
Linewidth (FWHM)		<100	kHz
Side Mode Suppression Ratio (SMSR)		>40	dB
RIN		-145	dB/Hz
Polarization Extinction Ratio (PER)		>20	dB
Optical Fiber		PMF	
Optical Connector		FC or SC, SPC or APC	

1. Lasers with extended wavelength ranges also available. C-band: 1520-1580nm (189.75-197.20THz). L-band: 1563-1623nm (184.80-191.80THz). Note: The above specifications may change without prior notice.

Ordering Information

Mainframe

TLG-300M-12

Narrow Linewidth Tunable Laser Unit

TLG-300-S- **-**

Wavelength	Connector Type
C : C-band	FS : FC/SPC SS : SC/SPC
L : L-band	FA : FC/APC SA : SC/APC
N : N/A	

