

Multi-Channel Narrow-Linewidth Tunable Laser

TLG-320

- Slot configuration allows future channel expansion
- Mainframes can be cascaded to accommodate over 160ch
- Firmware memorizes “last setting” for hassle-free start-up

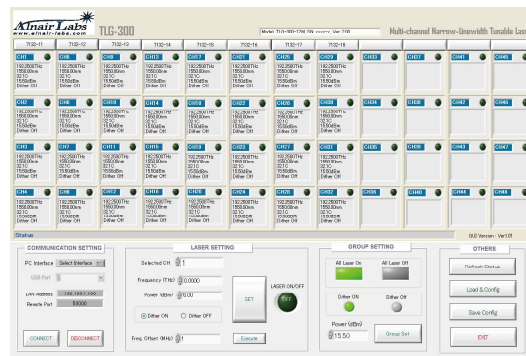
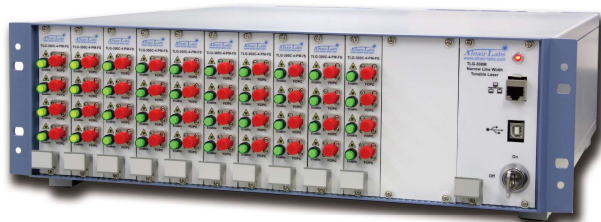
1550nm

Narrow Line-Width

Slot Configuration

Max. 48ch

Remote



Specification

Mainframe		unit
Slot capacity	12	units
Max. laser module capacity	48	channels
PC interface	USB, GPIB, Ethernet	
Laser safety	Front panel key-lock, software based interlock	
Power supply	AC 100-240 (50 / 60 Hz)	V
Power consumption	< 650	W
Dimension (W x H x D)	448 x 177 x 540	mm
Weight	< 16	kg
Laser unit		unit
Output power range	C-band	+9.5 to +15.5
	L-band	+9.5 to +13.5
Optical power accuracy	+/-1	
Wavelength range ¹	C-band	1528.90 to 1567.21
	L-band	1570.01 to 1608.76
Frequency range ¹	C-band	191.29 to 196.09
	L-band	186.35 to 190.95
Channel spacing	Continuous	
Frequency fine tune resolution	1	MHz
Frequency fine tune range	+/-6	GHz
Frequency accuracy	+/-2.5	GHz
Linewidth (FWHM), instantaneous	< 100	kHz
Side mode suppression ratio (SMSR)	> 40	dB
RIN	-145	dB/Hz
Polarization extinction ratio (PER)	> 18	dB
Warm-up time	30	s
Optical fiber	PMF	
Optical connector	FC or SC, SPC or APC	

¹. Please inquire for L-band laser.
The above specifications may change without prior notice.

Ordering Information

Mainframe

TLG - 310M - 12

Laser Unit

TLG - 320 - S - [] - []

